

Inductive Proximity Sensor

Double Sensing Distance

PQJ-D

Proximity Sensors

Photoelectric Sensors

Measurement Sensors

Vision & Safety Sensors



SALIENT FEATURES

- ◆ IP - 67, Brass Housing
- ◆ Short - Circuit protection
- ◆ Reverse Polarity Protection
- ◆ Shielded and Non - Shielded
- ◆ Prewired and Connector Type
- ◆ M8, M12, M18 and M30 Models

Model Number Legend



PQJ-D - □□ - □□ - □
 1 2 3 4 5 6

1. Series

PQJ-D

2. Housing

M8: M8, Threaded

M12: M12, Threaded

M18: M18, Threaded

M30: M30, Threaded

3. Shield

F: Flush/ Shielded

N: Non-Flush/ Unshielded

4. Sensing Distance

2: 2 mm

4: 4 mm

8: 8 mm

15: 15 mm

16: 16 mm

20: 20 mm

5. Output

NO: NPN - NO

PO: PNP - NO

NC: NPN - NC

PC: PNP - NC

6. Connection

2M: 2m Cable

M8C: M8 Connector

M12C: M12 Connector

#. Accessories included

Check Nut: 1 Pair

Example:

PQJ-D-M18F-8PO-M12C

PQJ Series - M18, Flush - 8mm Sensing Distance, PNP NO - M12 Connector

NOTE:

Contact us for models not shown in catalogue.

Connector cables are sold separately; look in CC series catalogue for the same (www.inno.sg/cc).

Control

Weighing

Automation

Components

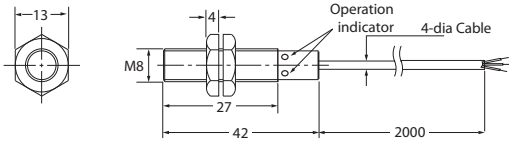
| Size | | M8 | M12 | M18 | M30 | |
|-------------------------|--------------------|---|------------------|-------------------|--------------------|--------------------|
| Model | Flush | NPN - NO | PQJ-D-M8F-2NO- _ | PQJ-D-M12F-4NO- _ | PQJ-D-M18F-8NO- _ | PQJ-D-M30F-15NO- _ |
| | | NPN - NC | PQJ-D-M8F-2NC- _ | PQJ-D-M12F-4NC- _ | PQJ-D-M18F-8NC- _ | PQJ-D-M30F-15NC- _ |
| | | PNP - NO | PQJ-D-M8F-2PO- _ | PQJ-D-M12F-4PO- _ | PQJ-D-M18F-8PO- _ | PQJ-D-M30F-15PO- _ |
| | | PNP - NC | PQJ-D-M8F-2PC- _ | PQJ-D-M12F-4PC- _ | PQJ-D-M18F-8PC- _ | PQJ-D-M30F-15PC- _ |
| | Non-Flush | NPN - NO | PQJ-D-M8N-4NO- _ | PQJ-D-M12N-8NO- _ | PQJ-D-M18N-16NO- _ | PQJ-D-M30N-20NO- _ |
| | | NPN - NC | PQJ-D-M8N-4NC- _ | PQJ-D-M12N-8NC- _ | PQJ-D-M18N-16NC- _ | PQJ-D-M30N-20NC- _ |
| | | PNP - NO | PQJ-D-M8N-4PO- _ | PQJ-D-M12N-8PO- _ | PQJ-D-M18N-16PO- _ | PQJ-D-M30N-20PO- _ |
| | | PNP - NC | PQJ-D-M8N-4PC- _ | PQJ-D-M12N-8PC- _ | PQJ-D-M18N-16PC- _ | PQJ-D-M30N-20PC- _ |
| Sensing Distance | Flush | 2mm | 4mm | 8mm | 15mm | |
| | Non-Flush | 4mm | 8mm | 16mm | 20mm | |
| Standard Sensing Target | | Iron, Ø8x1mm | Iron, Ø12x1mm | Iron, Ø18x1mm | Iron, Ø30x1mm | |
| Hysteresis | | ± 15% | | | | |
| Response Freq./ Time | Flush | 1500 Hz/ 0.1ms | 1000 Hz/ 0.1ms | 500 Hz/ 0.2ms | 250 Hz/ 0.5ms | |
| | Non-Flush | 1000 Hz/ 0.1ms | 800 Hz/ 0.2ms | 400 Hz/ 0.5ms | 100 Hz/ 1ms | |
| Supply Voltage | | 10-30VDC (ripple included) | | | | |
| Current Consumption | | < 10mA | | | | |
| Connection | | PQJ-D- _ _ - _ _ - 2M - 2 meter pre-wired; PQJ-D- _ _ - _ _ - M8C - M8 Connector; PQJ-D- _ _ - _ _ - M12C - M12 Connector | | | | |
| Output | Type | NPN or PNP - NO/ NC depending on the model | | | | |
| | Switching Capacity | 200mA; Overload trip: 220mA | | | | |
| | Leakage Current | < 0.01mA | | | | |
| | Voltage Drop | < 1.5VDC | | | | |
| Indication | | Operation: Yellow LED | | | | |
| Protection Circuits | | Reverse power supply polarity; reversed output polarity; Short circuit; Surge Suppressor | | | | |
| Dielectric Strength | | 1000 VAC, 50/60 Hz for 1 minute between current carry parts and case | | | | |
| Voltage Influence | | ± 5% max. of sensing distance (ref. sensing distance taken at 24VDC) | | | | |
| Temperature Influence | | ± 10% max. of sensing distance (ref. sensing distance taken at 25°C) | | | | |
| Vibration Resistance | | 10 - 55Hz, 1mm for 2 hours in X, Y, Z directions (destruction) | | | | |
| Shock Resistance | | 50 G (10 times) in X, Y, Z direction for 3 times (destruction) | | | | |
| Ambient Temperature | | Operation: -25° ~ 70° C; Storage: -30° ~ 80° C (non-freezing; non-condensing) | | | | |
| Ambient Humidity | | Operation: 40 ~ 85% RH; Storage: 35 ~ 95% RH (non- condensing) | | | | |
| Protection Class | | IP-67 | | | | |
| Weight | Prewired | approx. 65g | approx. 75g | approx. 95g | approx. 160g | |
| | Connector | approx. 20g | approx. 35g | approx. 60g | approx. 140g | |
| Cable | | 2M, 4Ø 3*0.15 | 2M, 4Ø 3*0.25 | 2M, 4Ø 3*0.34 | 2M, 4Ø 3*0.34 | |
| Material | | Head: PBT; Tube: Nickel plated Brass (SS for M8); Nuts: Nickel plated Brass; | | | | |
| Tightening Torque | | 7 Nm (max.) | 12 Nm (max.) | 30 Nm (max.) | 50 Nm (max.) | |

Sensor Dimension Drawing

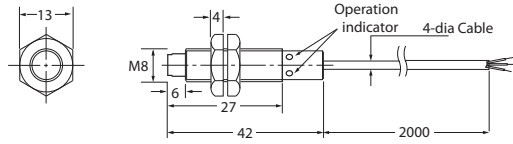
PQJ-D

All dimensions are in mm

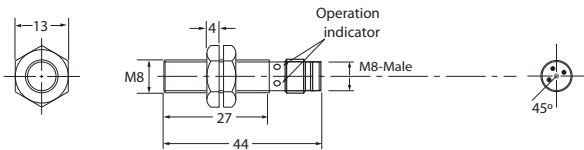
PQJ-D-M8F-1_-2M



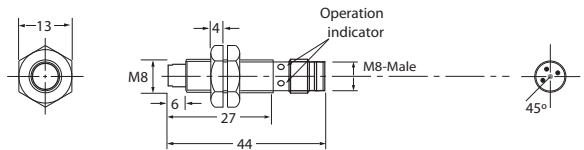
PQJ-D-M8N-2_-2M



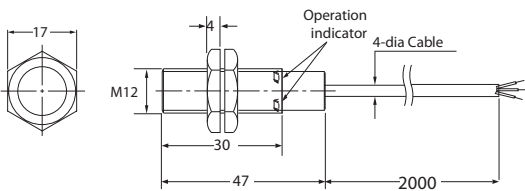
PQJ-D-M8F-1_-M8C



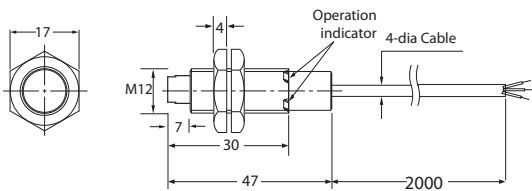
PQJ-D-M8N-2_-M8C



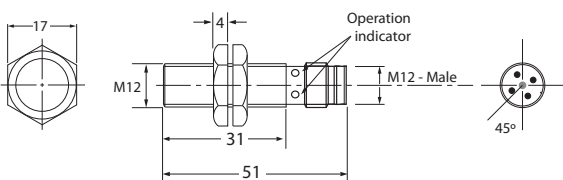
PQJ-D-M12F-2_-2M



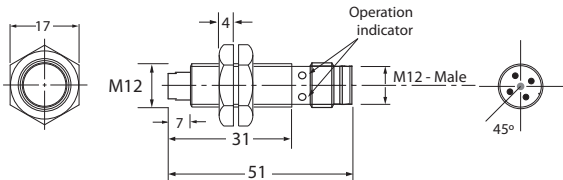
PQJ-D-M12N-5_-2M



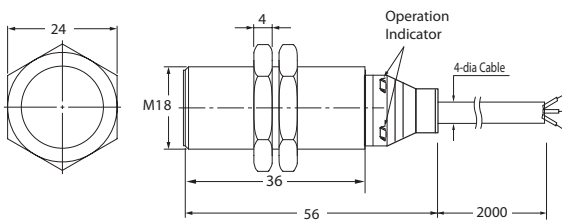
PQJ-D-M12F-2_-M12C



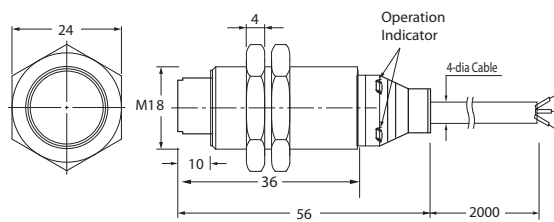
PQJ-D-M12N-5_-M12C



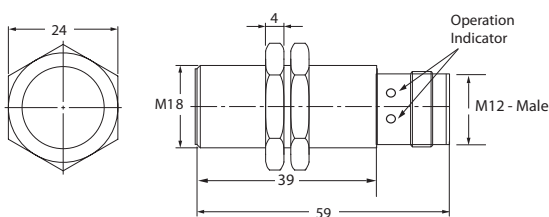
PQJ-D-M18F-5_-2M



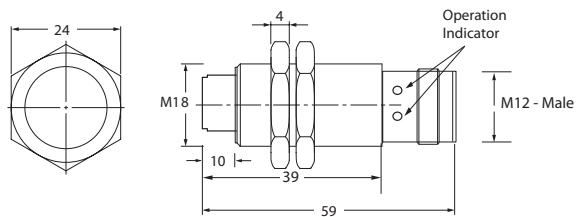
PQJ-D-M18N-10_-2M



PQJ-D-M18F-5_-M12C



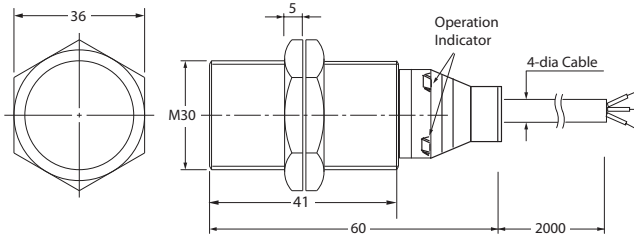
PQJ-D-M18N-10_-M12C



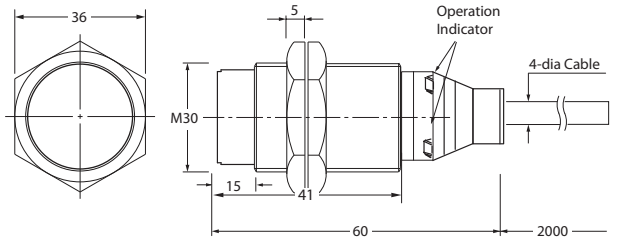
Sensor Dimension Drawing

PQJ-D

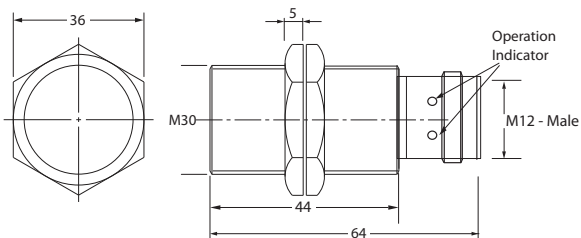
PQJ-D-M30F-10_-M12C



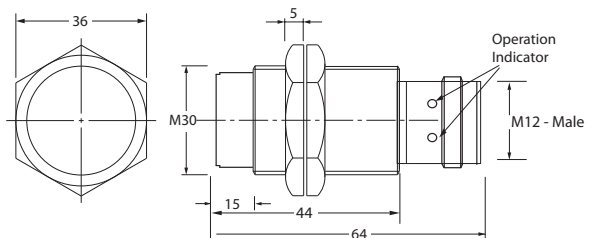
PQJ-D-M30N-20_-M12C



PQJ-D-M30F-10_-2M

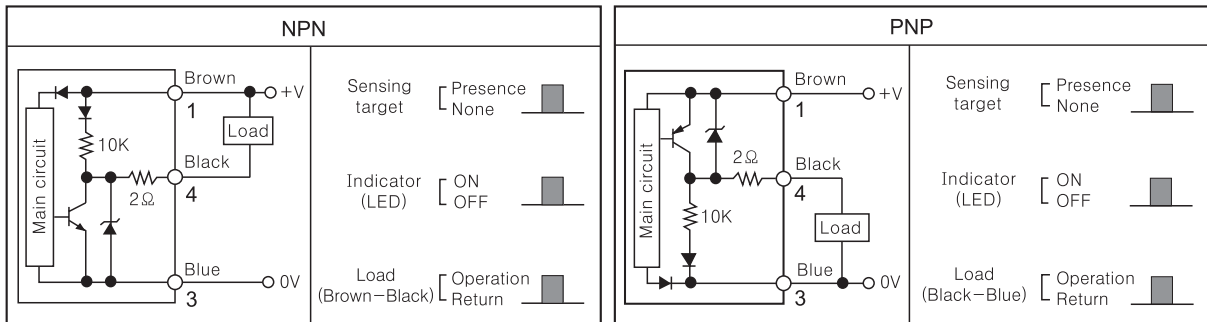


PQJ-D-M30N-20_-2M



All dimensions are in mm

Control Output Diagram



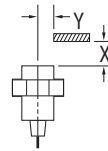
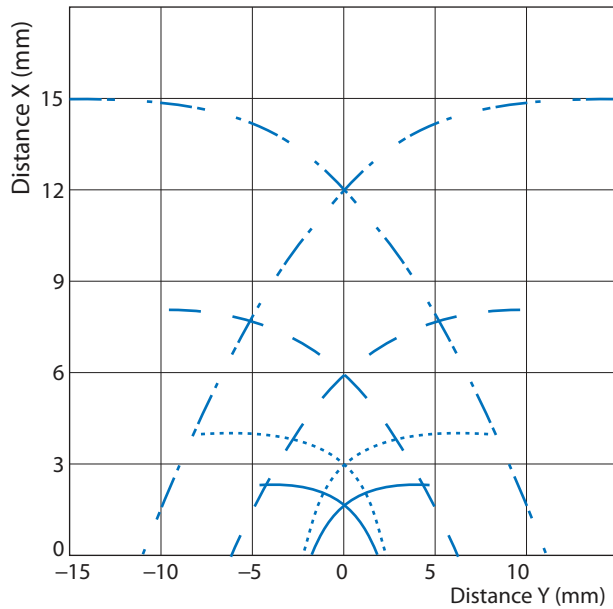
Brown : DC 10~30V
 Blue : 0V
 Black : Control Output

Note: 1, 3, 4 are the Pin numbers for the M12 Connector Models;
 (1), (2), (3) are the Pin numbers for the M8 Connector Models.

Operational Range

PQJ-D

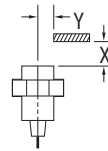
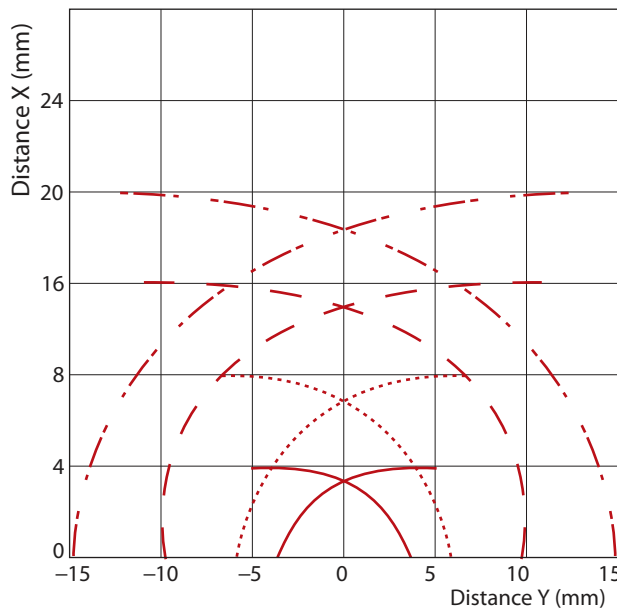
• Flush Type



Note: Operational Range testing carried out at room temperature using standard Test Object.

- PJJ-D-M8F-2 →
- PJJ-D-M12F-4 →
- PJJ-D-M18F-8 →
- PJJ-D-M30F-15 →

• Non-Flush Type



- PJJ-D-M8N-4 →
- PJJ-D-M12N-8 →
- PJJ-D-M18N-16 →
- PJJ-D-M30N-20 →

Exclusively Represented by:

Intech Systems Chennai Pvt Ltd
 S-2, Guindy Industrial Estate
 Chennai - 600 032. Ph: 4353 8888
 Email: info@intechchennai.com

www.inno.sg

© INNO, Rights Reserved
 In the interest of continuous product improvement
 specifications are subject to change without notice

Cat. No. PQJ-D-B14